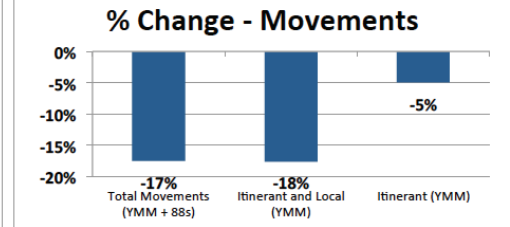
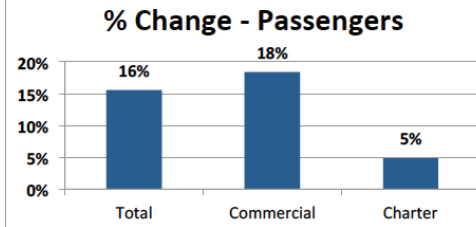


April 2014 Statistics

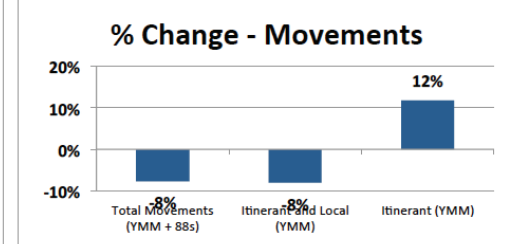
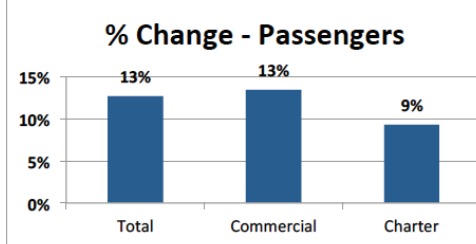
April, 2014 Compared to April, 2013

Month	April		% Change
	2013	2014	
Passengers:			
Total	95,251	110,104	15.6%
Commercial	75,522	89,418	18.4%
Charter	19,729	20,686	4.9%
Aircraft Movements:			
Total Movements (YMM + 88s)	7,461	6,161	-17.4%
Itinerant and Local (YMM)	7,205	5,938	-17.6%
Itinerant (YMM)	4,795	4,558	-4.9%



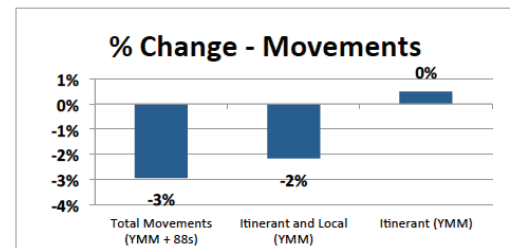
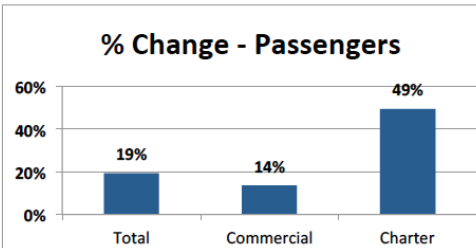
First 4 Months of 2014 Compared to 2013

Year-to-Date	First 4 Months		% Change
	2013	2014	
Passengers:			
Total	371,728	418,930	12.7%
Commercial	300,832	341,429	13.5%
Charter	70,896	77,501	9.3%
Aircraft Movements:			
Total Movements (YMM + 88s)	20,071	18,534	-7.7%
Itinerant and Local (YMM)	19,623	18,047	-8.0%
Itinerant (YMM)	16,145	18,047	11.8%



Rolling 12 Month Total (May, 2013 to April, 2014)

Rolling 12 Month Total	12 Month Total		% Change
	May, 2012 to April, 2013	May, 2013 to April, 2014	
Passengers:			
Total	1,041,728	1,242,639	19.3%
Commercial	877,173	996,632	13.6%
Charter	164,555	246,007	49.5%
Aircraft Movements:			
Total Movements (YMM + 88s)	79,840	77,495	-2.9%
Itinerant and Local (YMM)	76,941	75,273	-2.2%
Itinerant (YMM)	67,573	67,905	0.5%



April 2014 Passenger Count

