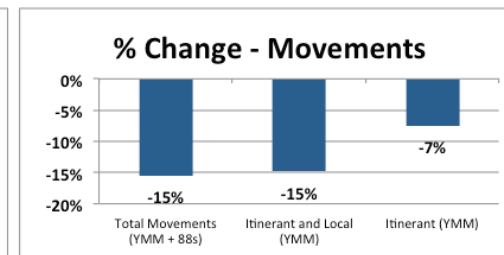
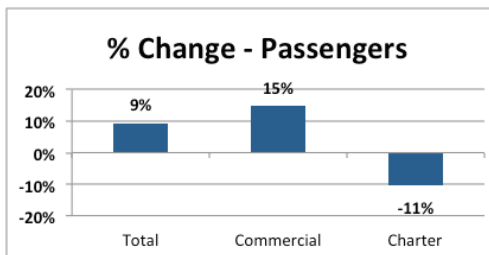


July 2014 Statistics

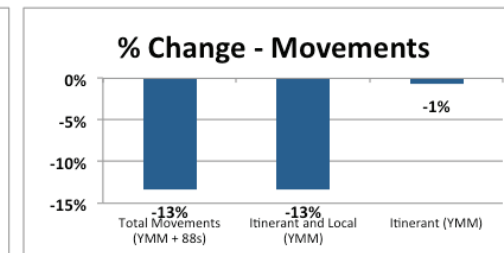
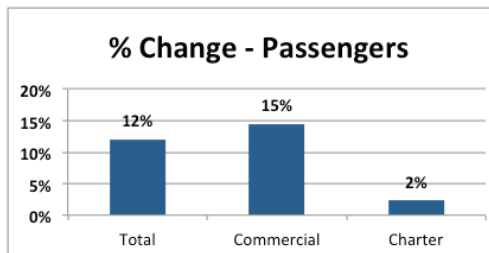
July, 2014 Compared to July, 2013

Month	July		% Change
	2013	2014	
Passengers:			
Total	107,528	117,535	9.3%
Commercial	84,723	97,131	14.6%
Charter	22,805	20,404	-10.5%
Aircraft Movements:			
Total Movements (YMM + 88s)	8,966	7,582	-15.4%
Itinerant and Local (YMM)	8,619	7,340	-14.8%
Itinerant (YMM)	7,933	7,340	-7.5%



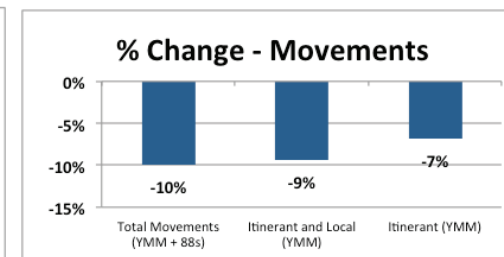
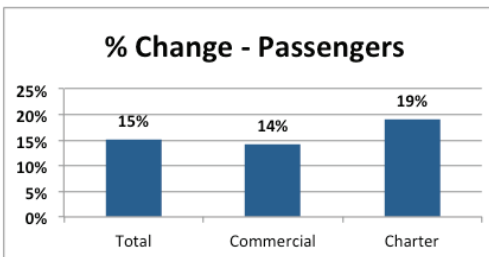
First 7 Months of 2014 Compared to 2013

Year-to-Date	First 7 Months		% Change
	2013	2014	
Passengers:			
Total	681,200	763,202	12.0%
Commercial	543,107	621,885	14.5%
Charter	138,093	141,317	2.3%
Aircraft Movements:			
Total Movements (YMM + 88s)	47,296	40,998	-13.3%
Itinerant and Local (YMM)	45,853	39,726	-13.4%
Itinerant (YMM)	40,003	39,726	-0.7%



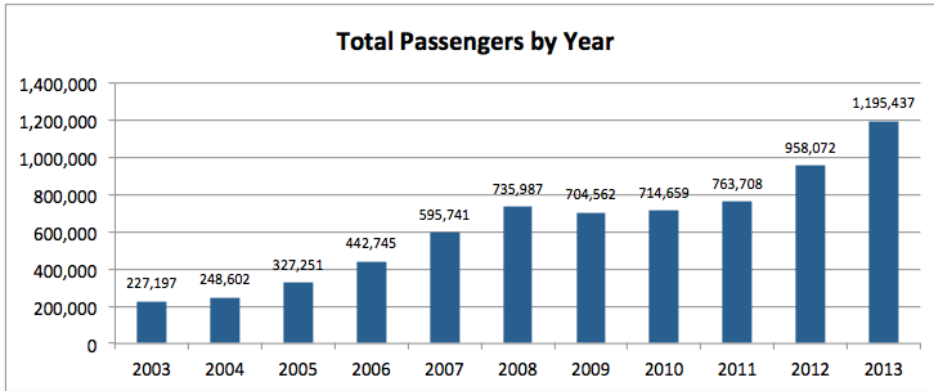
Rolling 12 Month Total (August, 2013 to July, 2014)

Rolling 12 Month Total	12 Month Total		% Change
	August, 2012 to July, 2013	August, 2013 to July, 2014	
Passengers:			
Total	1,109,545	1,277,439	15.1%
Commercial	905,832	1,034,813	14.2%
Charter	203,713	242,626	19.1%
Aircraft Movements:			
Total Movements (YMM + 88s)	80,790	72,734	-10.0%
Itinerant and Local (YMM)	78,075	70,722	-9.4%
Itinerant (YMM)	69,289	64,534	-6.9%

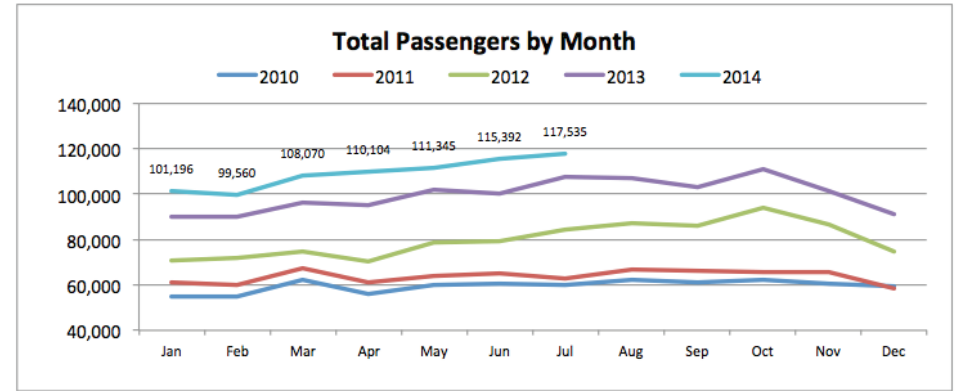


July 2014 At-A-Glance

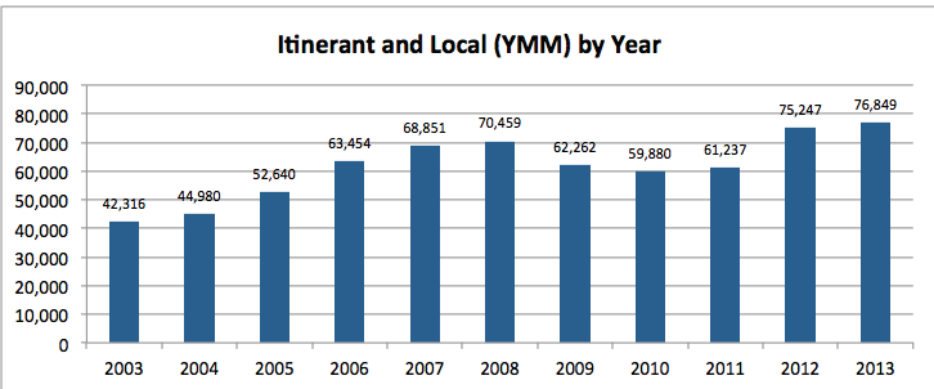
Total Passengers by Year



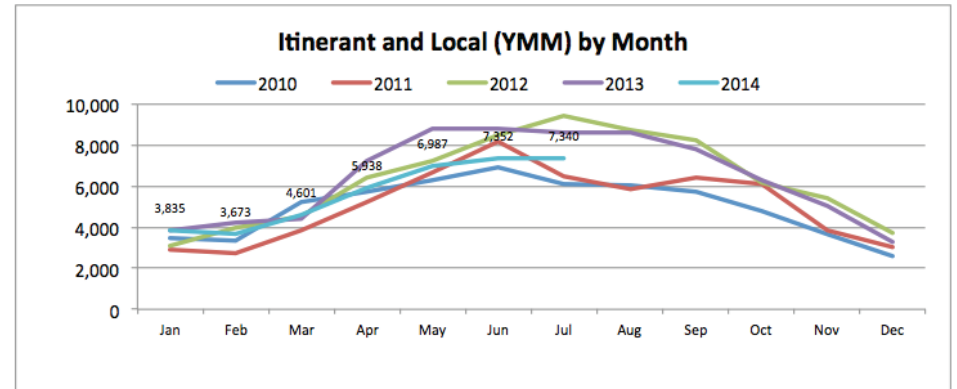
Total Passengers by Month



Total YMM Movements by Year



Total YMM Movements by Month



July 2014 Passenger Count

