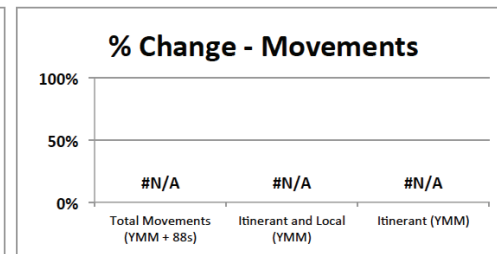
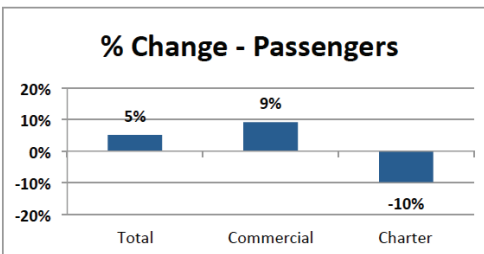


October 2014 Statistics

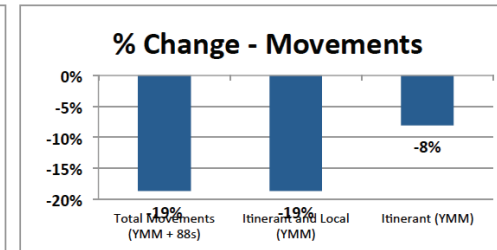
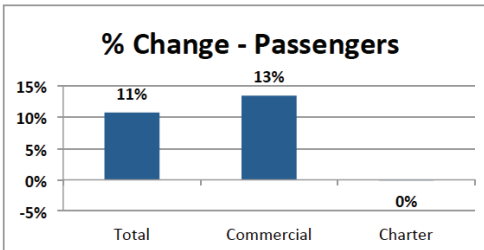
October, 2014 Compared to October, 2013

Month	October		% Change
	2013	2014	
Passengers:			
Total	111,210	116,917	5.1%
Commercial	87,810	95,793	9.1%
Charter	23,400	21,124	-9.7%
Aircraft Movements:			
Total Movements (YMM + 88s)	6,425	#N/A	#N/A
Itinerant and Local (YMM)	6,301	#N/A	#N/A
Itinerant (YMM)	5,589	#N/A	#N/A



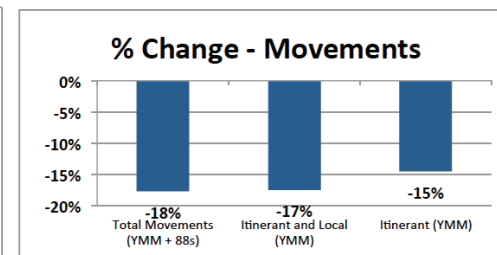
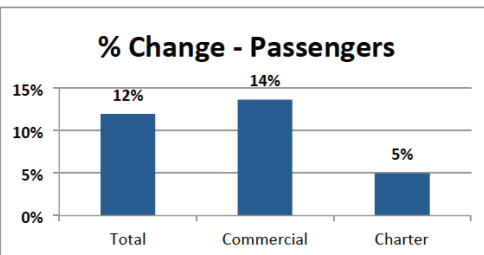
First 10 Months of 2014 Compared to 2013

Year-to-Date	First 10 Months		% Change
	2013	2014	
Passengers:			
Total	1,002,504	1,109,834	10.7%
Commercial	798,417	905,795	13.4%
Charter	204,087	204,039	0.0%
Aircraft Movements:			
Total Movements (YMM + 88s)	70,554	57,362	-18.7%
Itinerant and Local (YMM)	68,512	55,729	-18.7%
Itinerant (YMM)	60,628	55,729	-8.1%



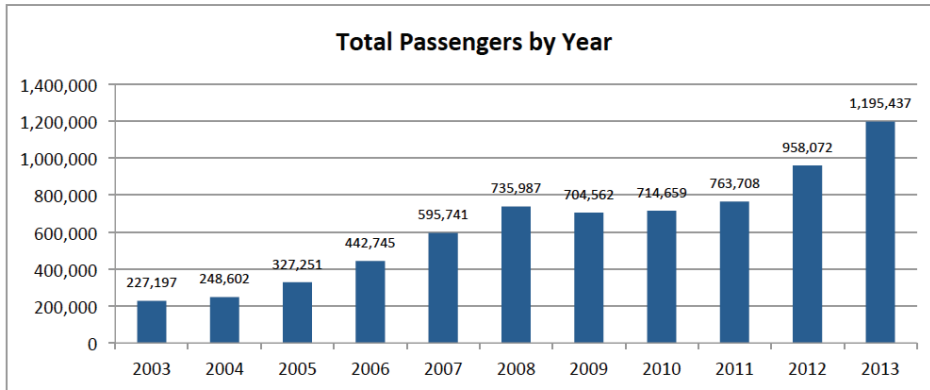
Rolling 12 Month Total (November, 2013 to October, 2014)

Rolling 12 Month Total	12 Month Total		% Change
	November, 2012 to October, 2013	November, 2013 to October, 2014	
Passengers:			
Total	1,163,561	1,302,767	12.0%
Commercial	935,569	1,063,413	13.7%
Charter	227,992	239,354	5.0%
Aircraft Movements:			
Total Movements (YMM + 88s)	80,005	65,840	-17.7%
Itinerant and Local (YMM)	77,636	64,066	-17.5%
Itinerant (YMM)	68,574	58,616	-14.5%

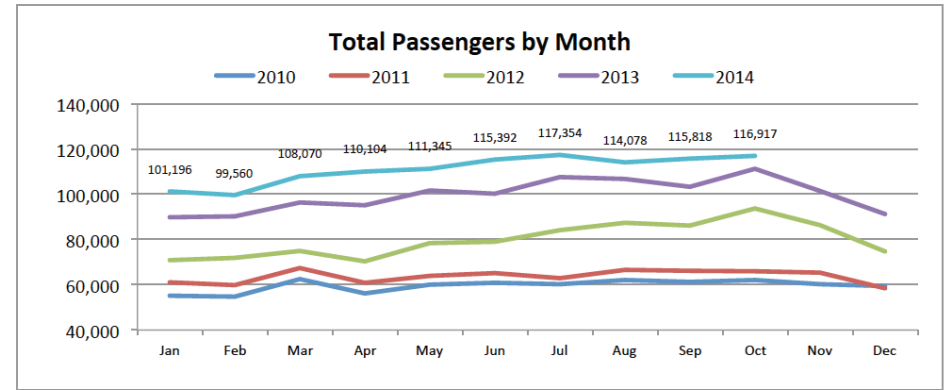


October 2014 At-A-Glance

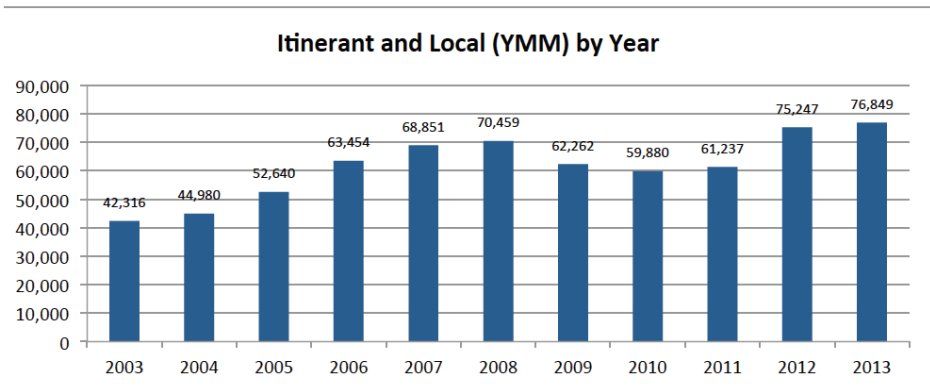
Total Passengers by Year



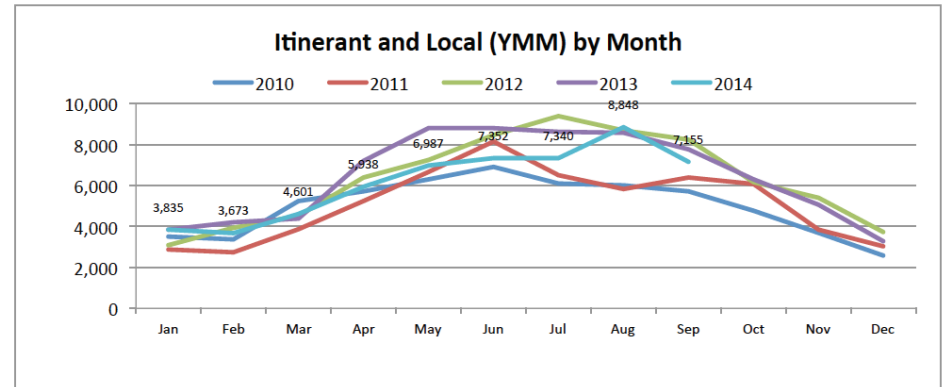
Total Passengers by Month



Total YMM Movements by Year



Total YMM Movements by Month



October 2014 Passenger Count

