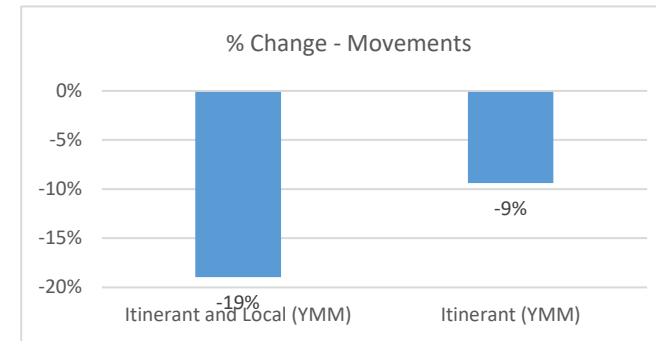
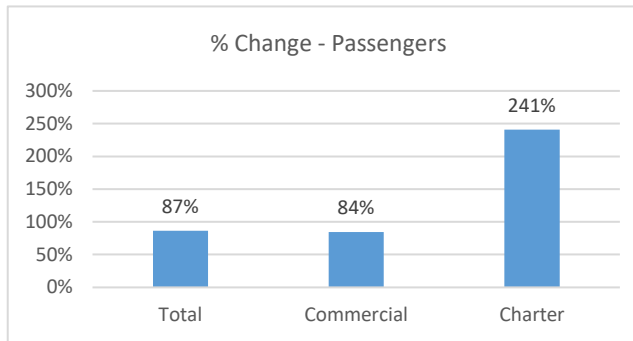


April 2022 Statistics

Current Month	April		% Change
	2021	2022	
Passengers			
Total	12,817	23,911	87%
Commercial	12,636	23,294	84%
Charter	181	617	241%
Aircraft Movements			
Itinerant and Local (YMM)	3,452	2,797	-19%
Itinerant (YMM)	2,316	2,099	-9%



Year-to-Date	4 Month Total		% Change
	2021	2022	
Passengers			
Total	49,997	83,632	67%
Commercial	49,230	82,316	67%
Charter	767	1,316	72%
Aircraft Movements			
Itinerant and Local (YMM)	9,434	9,989	6%
Itinerant (YMM)	7,020	7,773	11%

