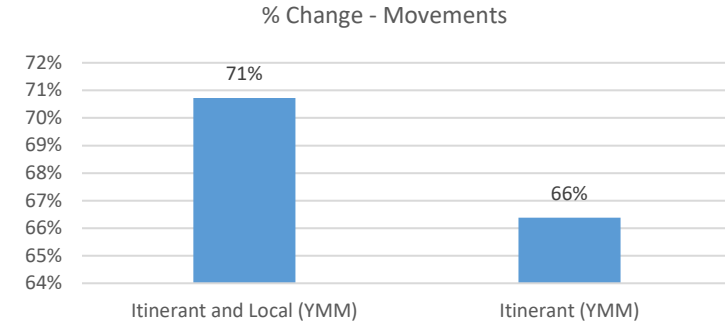
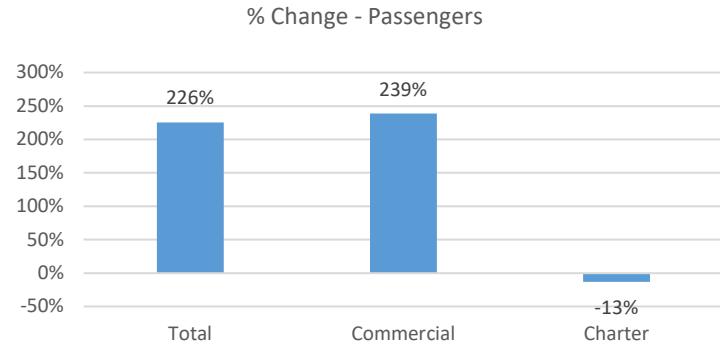
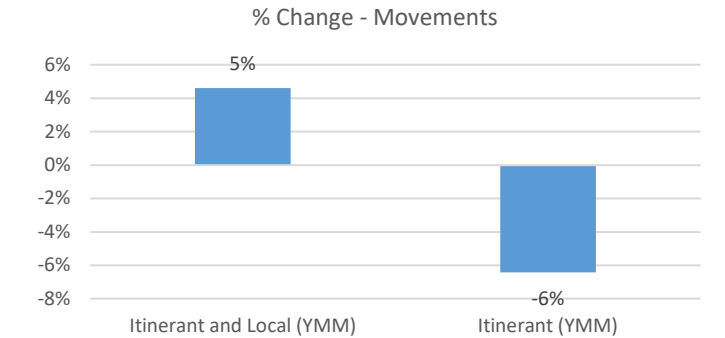
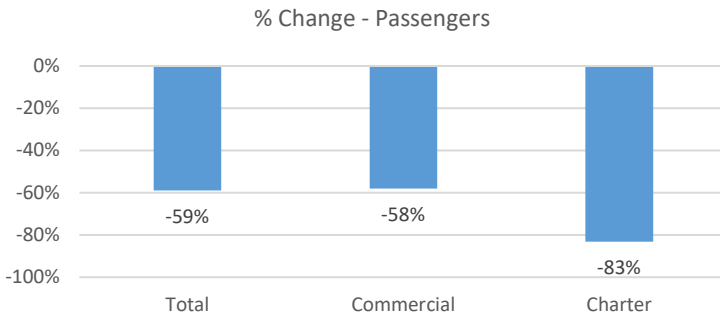


April 2021 Statistics

Current Month	April		% Change
	2020	2021	
Passengers			
Total	3,937	12,817	226%
Commercial	3,729	12,636	239%
Charter	208	181	-13%
Aircraft Movements			
Itinerant and Local (YMM)	2,022	3,452	71%
Itinerant (YMM)	1,392	2,316	66%



Year-to-Date	4 Month Total		% Change
	2020	2021	
Passengers			
Total	122,178	49,997	-59%
Commercial	117,607	49,230	-58%
Charter	4,571	767	-83%
Aircraft Movements			
Itinerant and Local (YMM)	9,018	9,434	5%
Itinerant (YMM)	7,502	7,020	-6%



Total Passengers by Year

