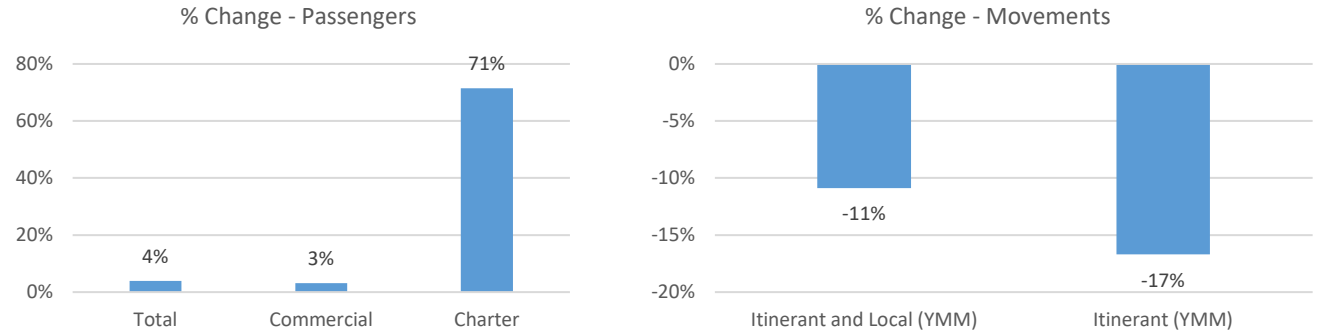
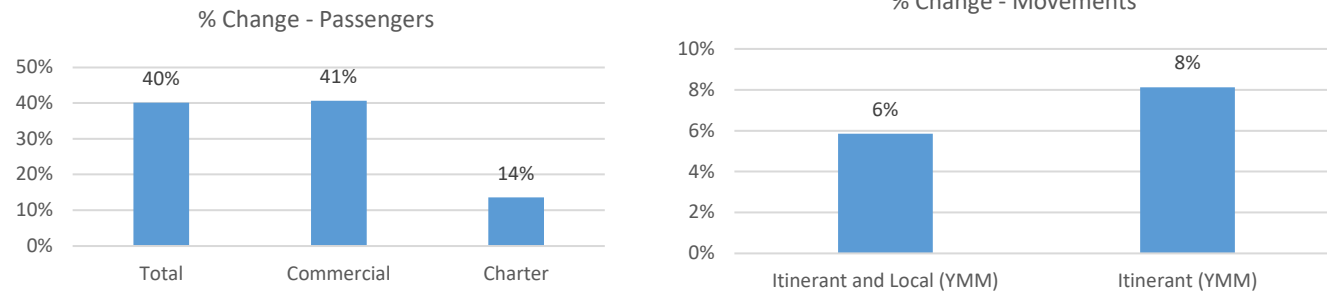


December 2022 Statistics

December, 2022 Compared to December, 2021



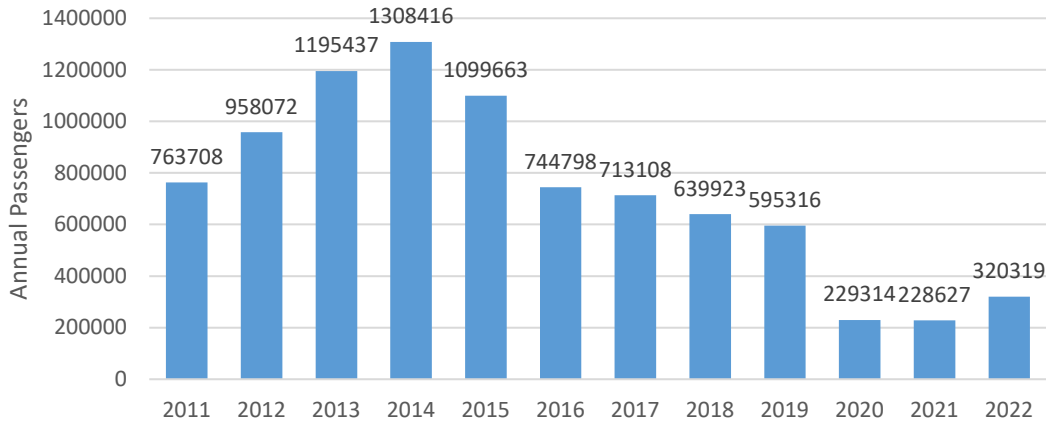
Year-to-Date December Comparing 2022 to 2021



Current Month	December		% Change
	2021	2022	
Passengers			
Total	25,695	26,703	4%
Commercial	25,394	26,187	3%
Charter	301	516	71%
Aircraft Movements			
Itinerant and Local (YMM)	2,381	2,122	-11%
Itinerant (YMM)	1,935	1,612	-17%

Year-to-Date	12 Month Total		% Change
	2021	2022	
Passengers			
Total	228,627	320,319	40%
Commercial	223,950	315,009	41%
Charter	4,677	5,310	14%
Aircraft Movements			
Itinerant and Local (YMM)	41,115	43,524	6%
Itinerant (YMM)	32,931	35,608	8%

Total Passengers by Year



Itinerant and Local Movements at YMM by Month

