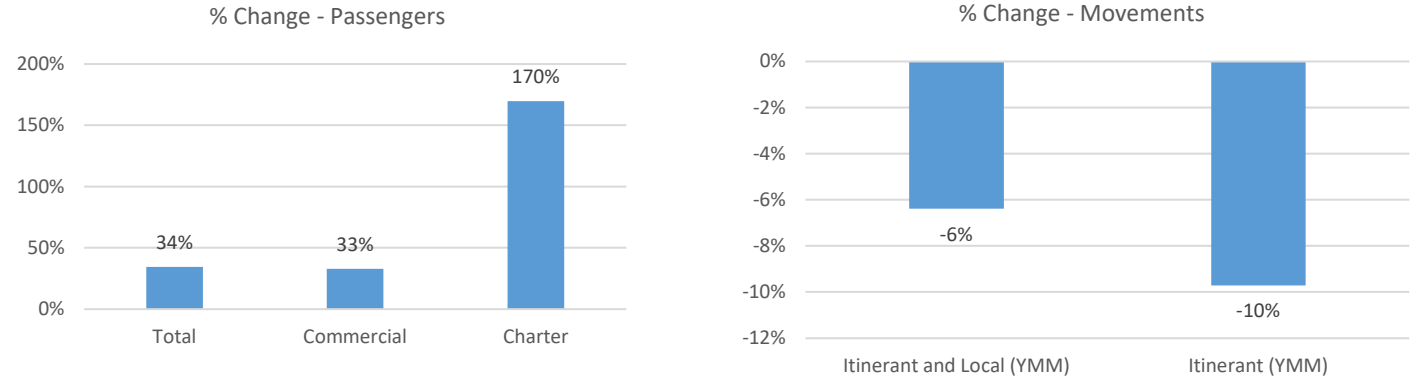


# November 2022 Statistics

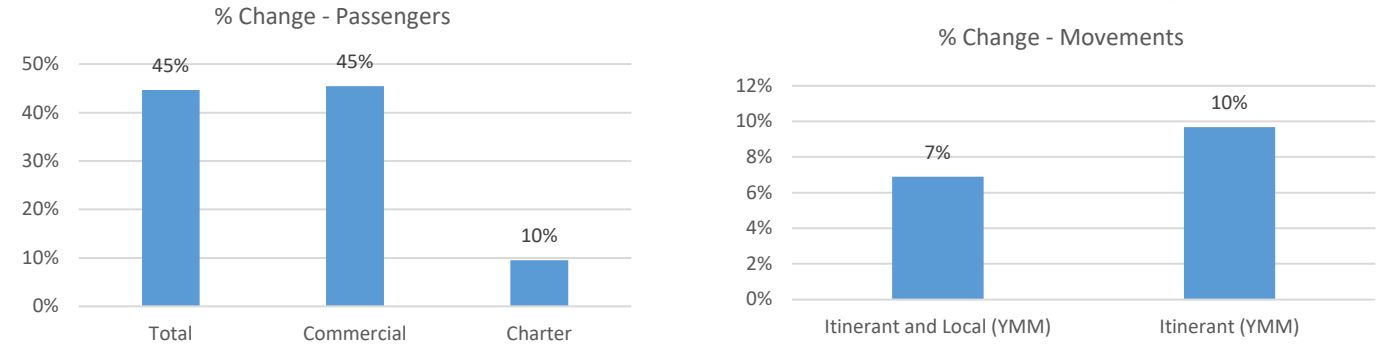
| Current Month             | November |        | % Change |
|---------------------------|----------|--------|----------|
|                           | 2021     | 2022   |          |
| <b>Passengers</b>         |          |        |          |
| Total                     | 21,096   | 28,356 | 34%      |
| Commercial                | 20,878   | 27,768 | 33%      |
| Charter                   | 218      | 588    | 170%     |
| <b>Aircraft Movements</b> |          |        |          |
| Itinerant and Local (YMM) | 3,272    | 3,063  | -6%      |
| Itinerant (YMM)           | 2,482    | 2,241  | -10%     |

| Year-to-Date              | 11 Month Total |         | % Change |
|---------------------------|----------------|---------|----------|
|                           | 2021           | 2022    |          |
| <b>Passengers</b>         |                |         |          |
| Total                     | 202,932        | 293,616 | 45%      |
| Commercial                | 198,556        | 288,822 | 45%      |
| Charter                   | 4,376          | 4,794   | 10%      |
| <b>Aircraft Movements</b> |                |         |          |
| Itinerant and Local (YMM) | 38,734         | 41,402  | 7%       |
| Itinerant (YMM)           | 30,996         | 33,996  | 10%      |

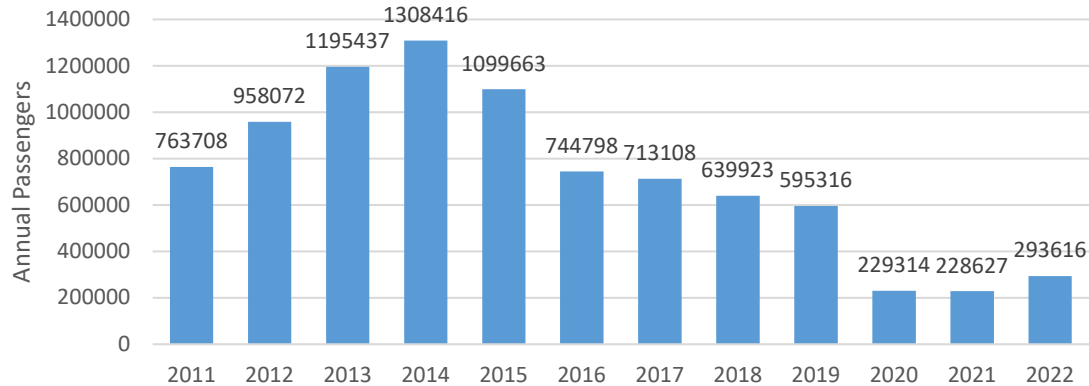
## November, 2022 Compared to November, 2021



## Year-to-Date November Comparing 2022 to 2021



## Total Passengers by Year



## Itinerant and Local Movements at YMM by Month

