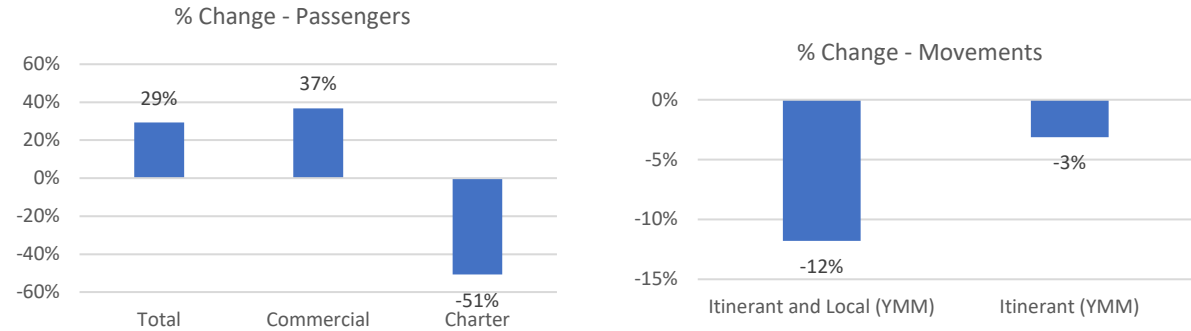


October 2022 Statistics

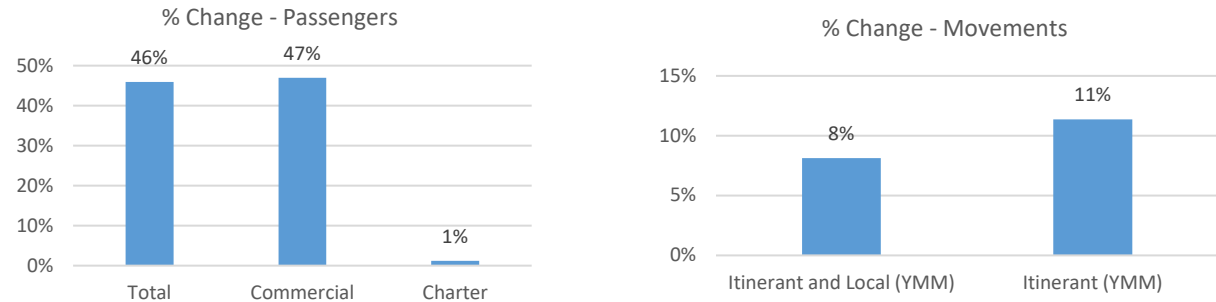
Current Month	October		
	2021	2022	% Change
Passengers			
Total	24,615	31,813	29%
Commercial	22,490	30,764	37%
Charter	2,125	1,049	-51%
Aircraft Movements			
Itinerant and Local (YMM)	4,094	3,612	-12%
Itinerant (YMM)	3,006	2,912	-3%

Year-to-Date	10 Month Total		
	2021	2022	% Change
Passengers			
Total	181,836	265,260	46%
Commercial	177,678	261,054	47%
Charter	4,158	4,206	1%
Aircraft Movements			
Itinerant and Local (YMM)	35,462	38,339	8%
Itinerant (YMM)	28,514	31,755	11%

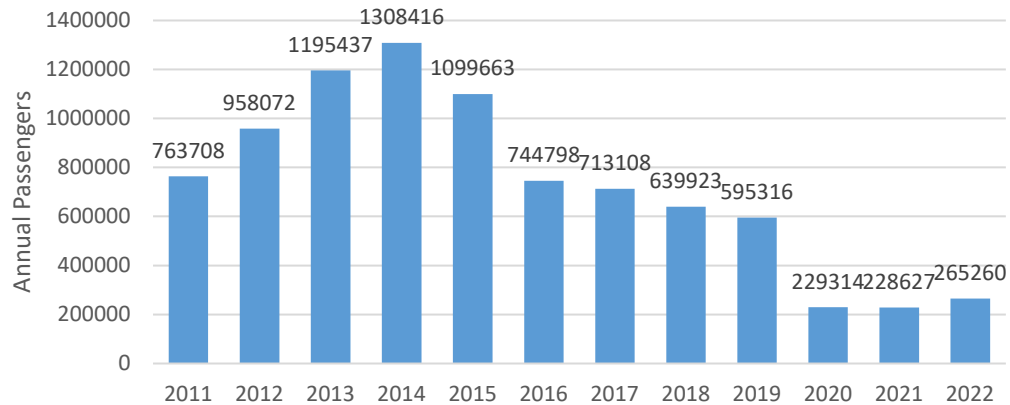
October, 2022 Compared to October, 2021



Year-to-Date October Comparing 2022 to 2021



Total Passengers by Year



Itinerant and Local Movements at YMM by Month

