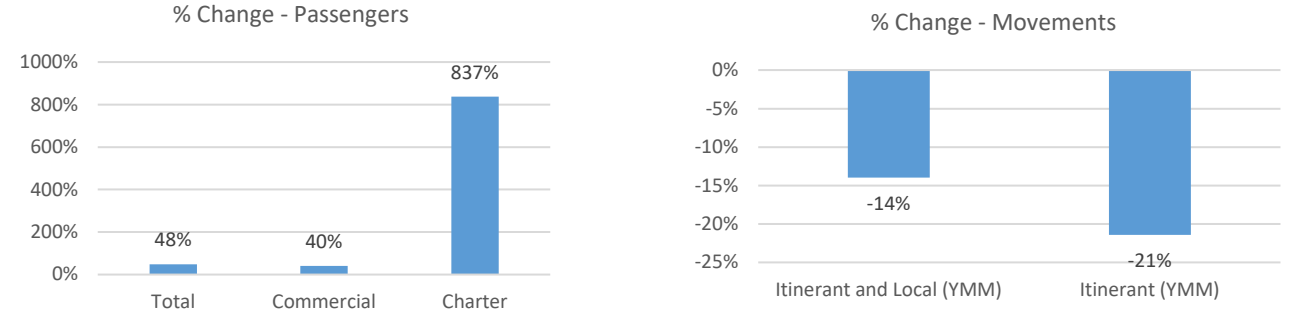


February 2023 Statistics

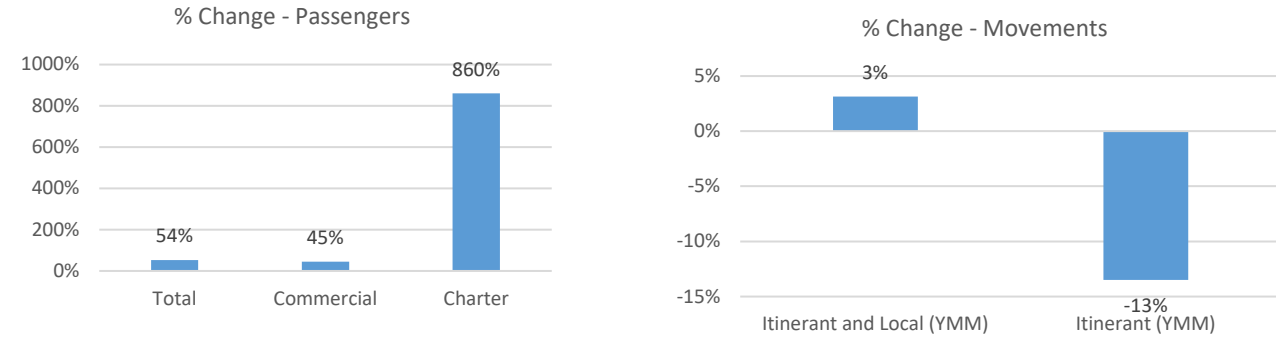
| Current Month | February | | % Change |
|---------------------------|----------|--------|----------|
| | 2022 | 2023 | |
| Passengers | | | |
| Total | 18,627 | 27,628 | 48% |
| Commercial | 18,421 | 25,698 | 40% |
| Charter | 206 | 1,930 | 837% |
| Aircraft Movements | | | |
| Itinerant and Local (YMM) | 2,232 | 1,920 | -14% |
| Itinerant (YMM) | 1,888 | 1,484 | -21% |

February, 2023 Compared to February, 2022

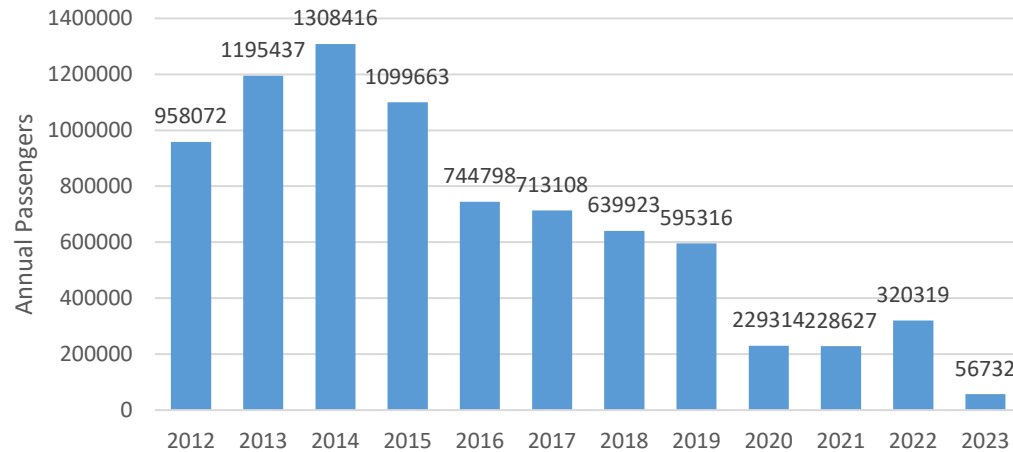


| Year-to-Date | 2 Month Total | | % Change |
|---------------------------|---------------|--------|----------|
| | 2022 | 2023 | |
| Passengers | | | |
| Total | 36,846 | 56,732 | 54% |
| Commercial | 36,450 | 52,930 | 45% |
| Charter | 396 | 3,802 | 860% |
| Aircraft Movements | | | |
| Itinerant and Local (YMM) | 4,406 | 4,544 | 3% |
| Itinerant (YMM) | 3,660 | 3,166 | -13% |

Year-to-Date February Comparing 2023 to 2022



Total Passengers by Year



Itinerant and Local Movements at YMM by Month

