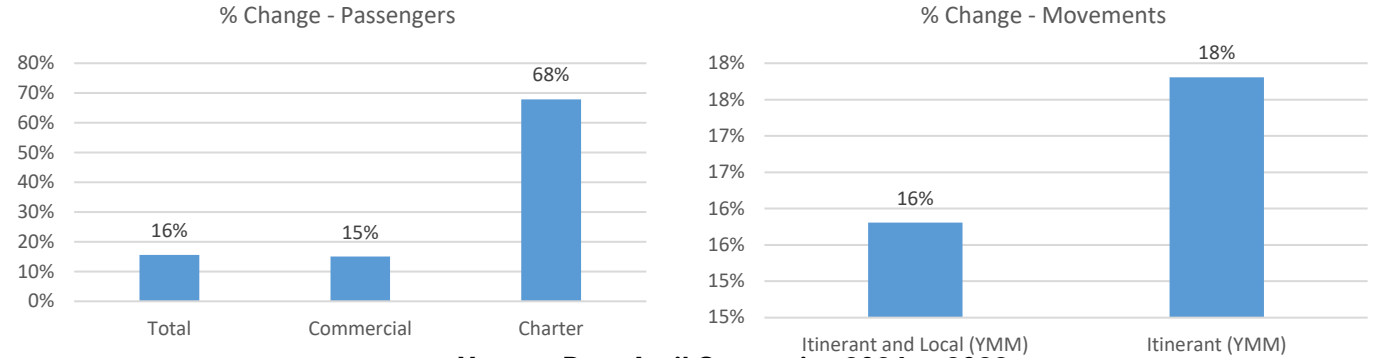


April 2024 Statistics

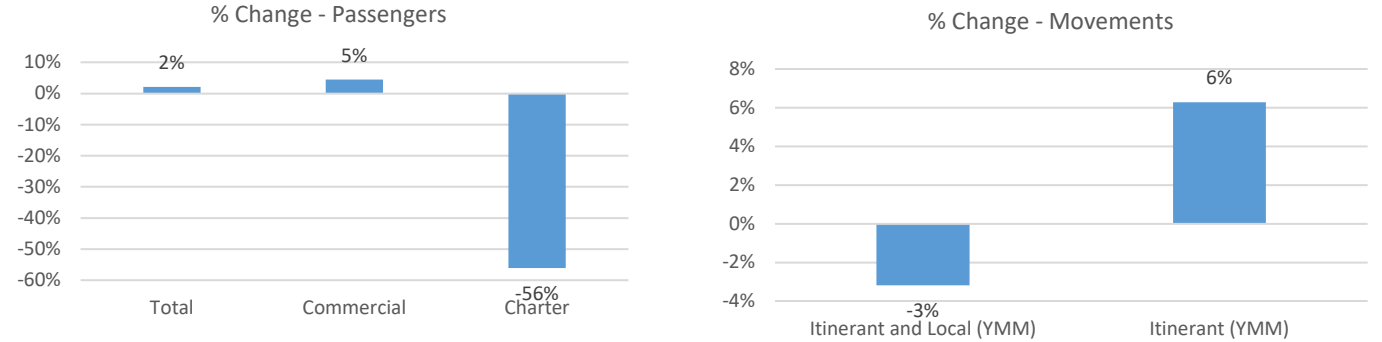
Current Month	April		% Change
	2023	2024	
Passengers			
Total	27,156	31,383	16%
Commercial	26,882	30,923	15%
Charter	274	460	68%
Aircraft Movements			
Itinerant and Local (YMM)	2,853	3,304	16%
Itinerant (YMM)	2,263	2,666	18%

Year-to-Date	4 Month Total		% Change
	2023	2024	
Passengers			
Total	113,929	116,351	2%
Commercial	109,437	114,376	5%
Charter	4,492	1,975	-56%
Aircraft Movements			
Itinerant and Local (YMM)	10,763	10,421	-3%
Itinerant (YMM)	7,535	8,009	6%

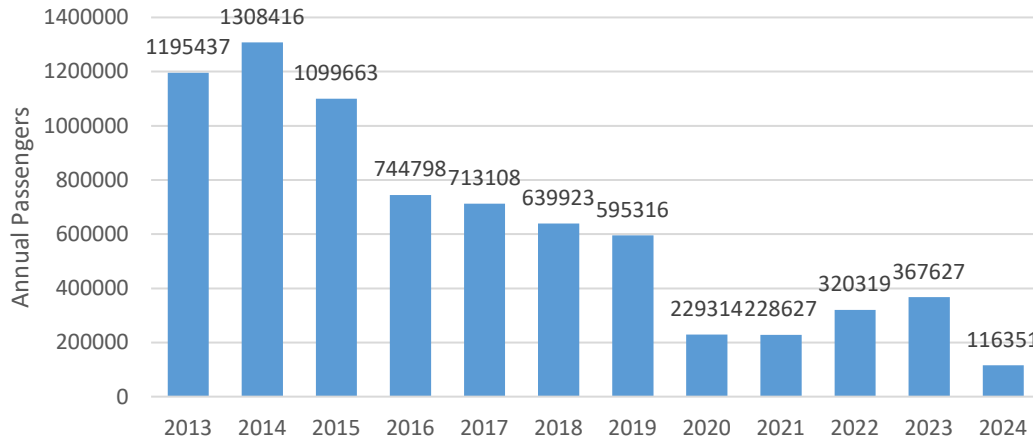
April, 2024 Compared to April, 2023



Year-to-Date April Comparing 2024 to 2023



Total Passengers by Year



Itinerant and Local Movements at YMM by Month

