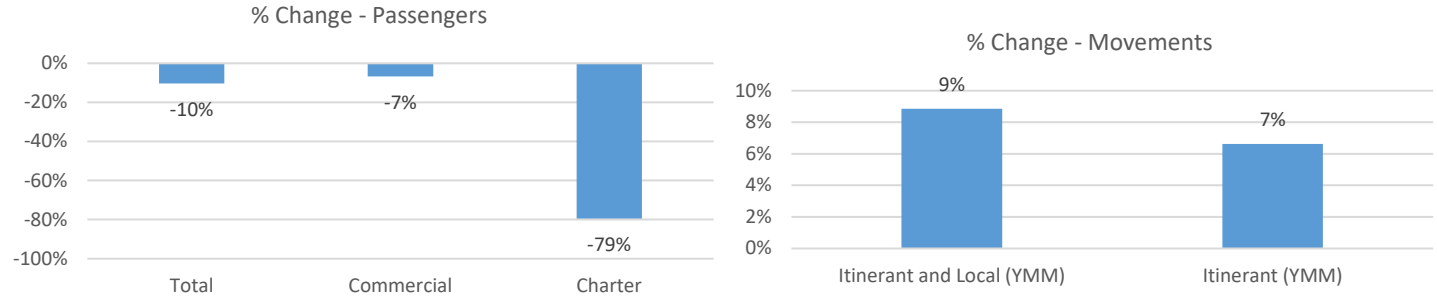


# September 2024 Statistics

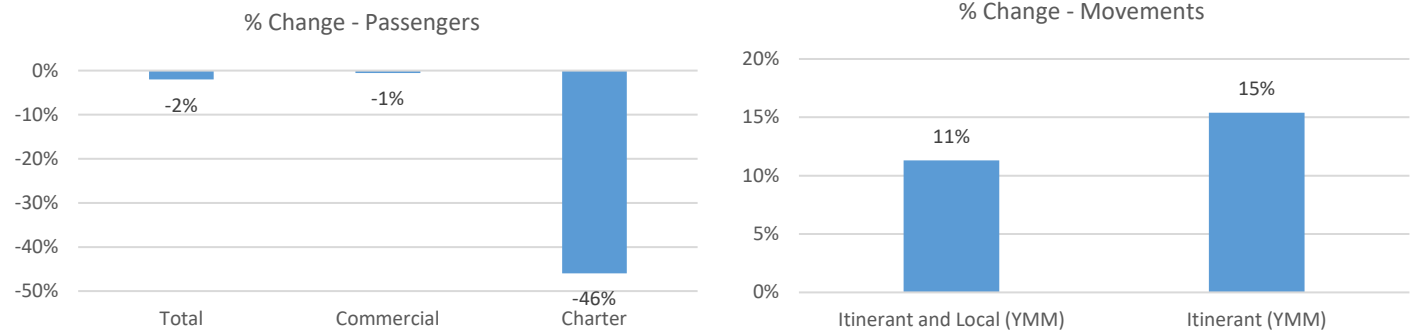
Current Month	September		% Change
	2023	2024	
<b>Passengers</b>			
Total	32,595	29,244	-10%
Commercial	31,006	28,917	-7%
Charter	1,589	327	-79%
<b>Aircraft Movements</b>			
Itinerant and Local (YMM)	4,596	5,003	9%
Itinerant (YMM)	4,126	4,399	7%

Year-to-Date	9 Month Total		% Change
	2023	2024	
<b>Passengers</b>			
Total	273,608	268,136	-2%
Commercial	264,803	263,378	-1%
Charter	8,805	4,758	-46%
<b>Aircraft Movements</b>			
Itinerant and Local (YMM)	34,688	38,609	11%
Itinerant (YMM)	29,296	33,809	15%

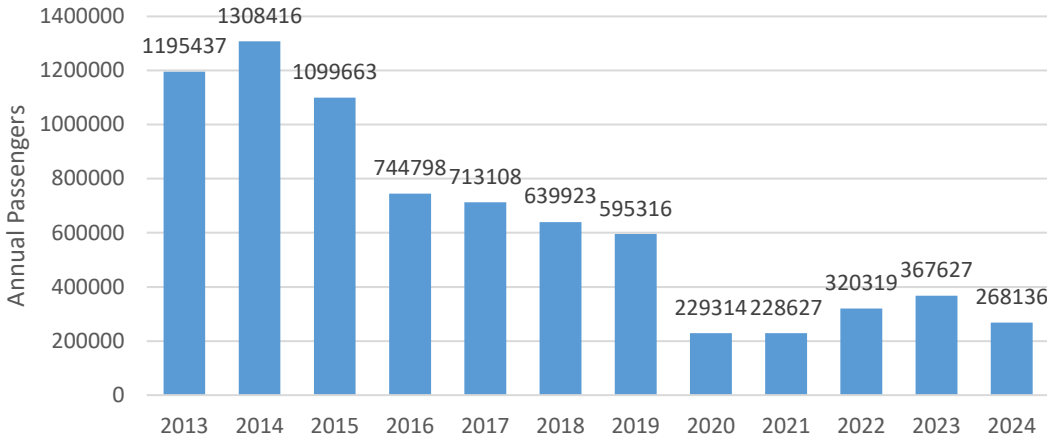
## September, 2024 Compared to September, 2023



## Year-to-Date September Comparing 2024 to 2023



## Total Passengers by Year



## Itinerant and Local Movements at YMM by Month

