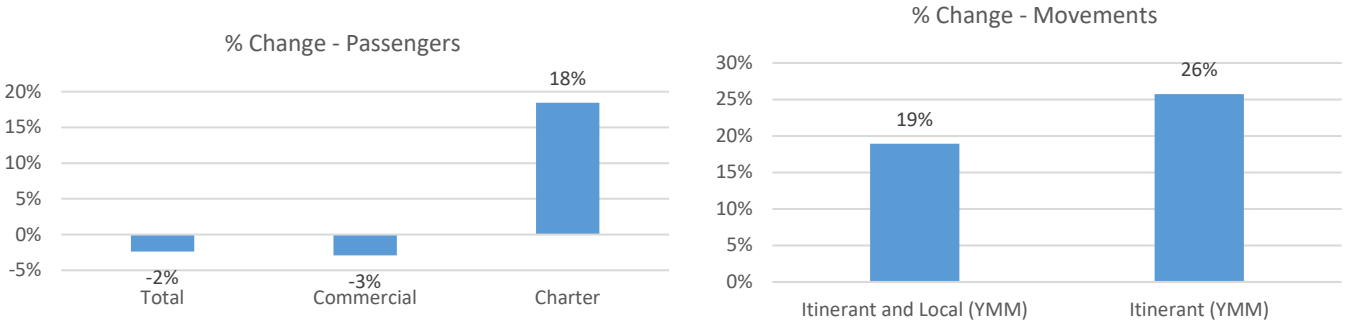


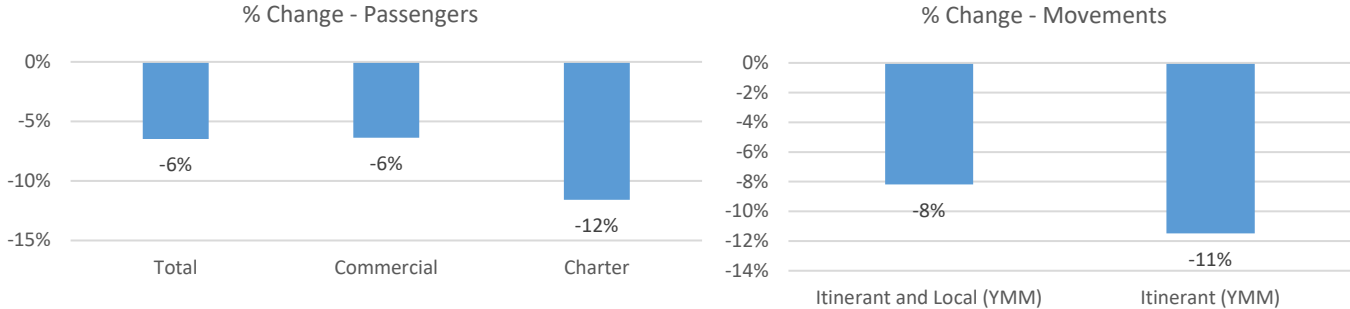
June 2025 Statistics

Current Month	June		
	2024	2025	% Change
Passengers			
Total	30,130	29,415	-2%
Commercial	29,338	28,477	-3%
Charter	792	938	18%
Aircraft Movements			
Itinerant and Local (YMM)	4,684	5,570	19%
Itinerant (YMM)	3,991	5,018	26%
Year-to-Date	6 Month Total		
	2024	2025	% Change
Passengers			
Total	175,146	163,813	-6%
Commercial	171,854	160,902	-6%
Charter	3,292	2,911	-12%
Aircraft Movements			
Itinerant and Local (YMM)	22,294	20,470	-8%
Itinerant (YMM)	19,019	16,834	-11%

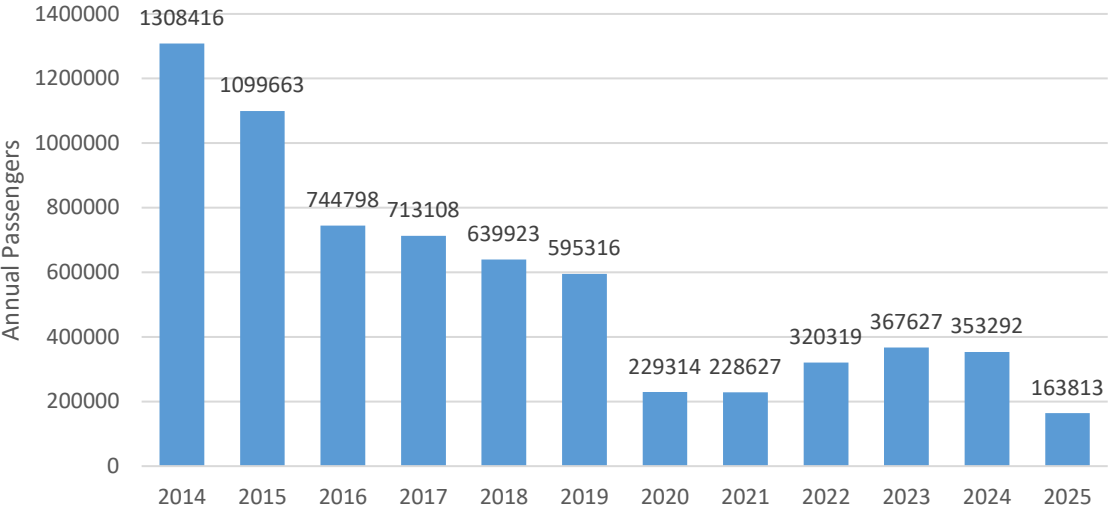
June, 2025 Compared to June, 2024



Year-to-Date June Comparing 2025 to 2024



Total Passengers by Year



Itinerant and Local Movements at YMM by Month

