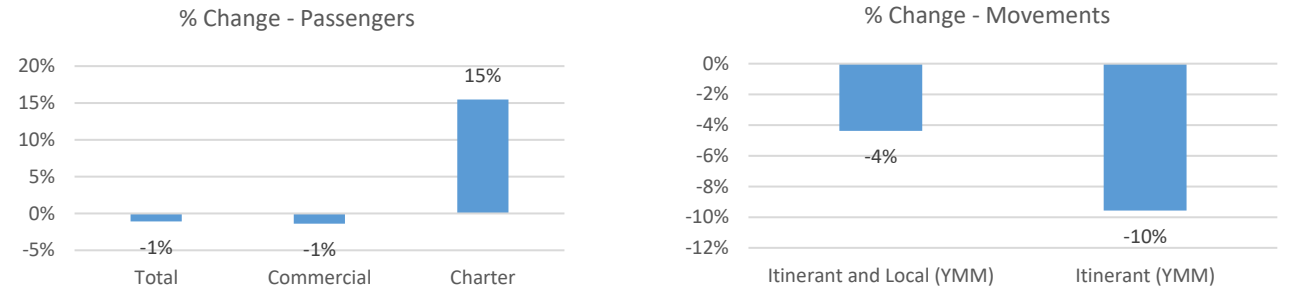


April 2026 Statistics

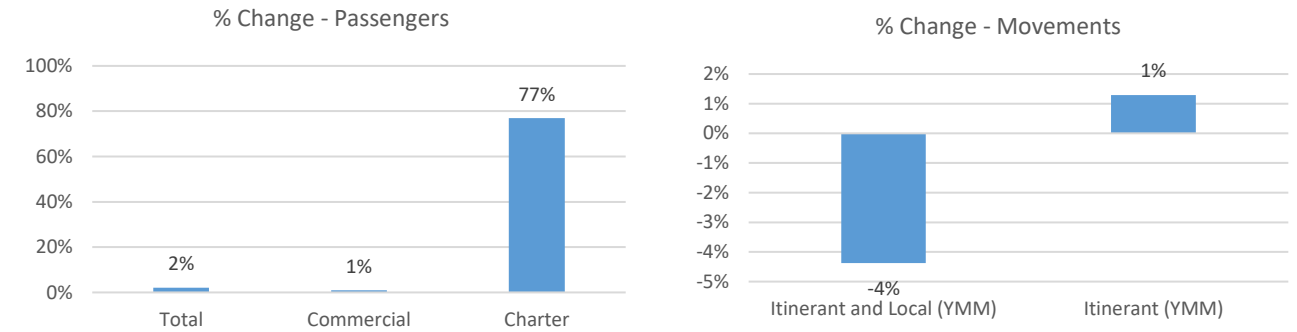
Current Month	April		% Change
	2025	2026	
Passengers			
Total	28,280	27,975	-1%
Commercial	27,750	27,363	-1%
Charter	530	612	15%
Aircraft Movements			
Itinerant and Local (YMM)	3,228	3,087	-4%
Itinerant (YMM)	2,434	2,201	-10%

Year-to-Date	4 Month Total		% Change
	2025	2026	
Passengers			
Total	106,429	108,640	2%
Commercial	104,785	105,732	1%
Charter	1,644	2,908	77%
Aircraft Movements			
Itinerant and Local (YMM)	10,302	9,851	-4%
Itinerant (YMM)	7,680	7,779	1%

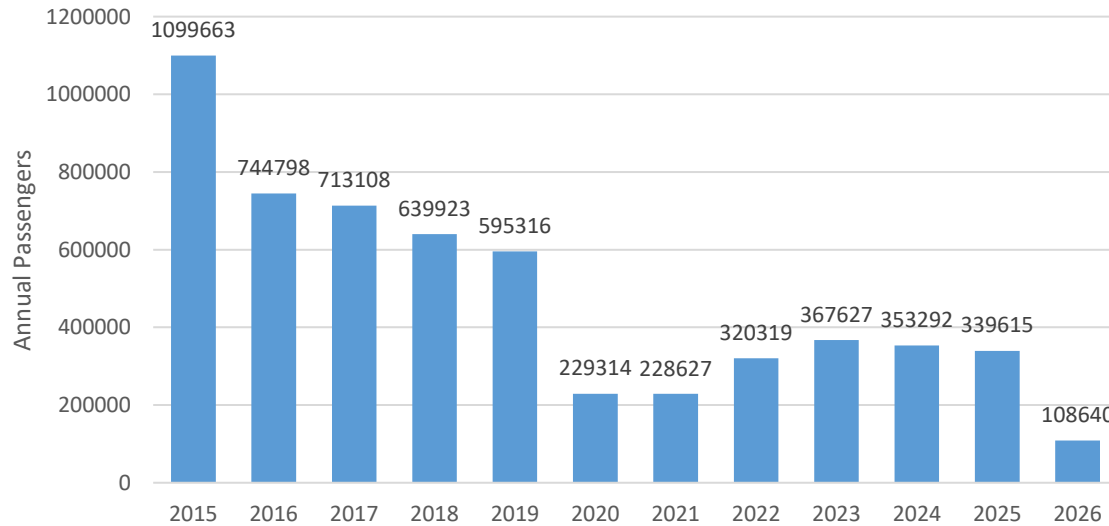
April, 2026 Compared to April, 2025



Year-to-Date April Comparing 2026 to 2025



Total Passengers by Year



Itinerant and Local Movements at YMM by Month

